

Case Study

Six Years Pumping 70% Sand Sludge

Potlatch Corp., McGehee, Arkansas

The Challenge

Six week average between breakdowns for centrifugals

Spending \$42,000/year on spare parts from abrasive wear

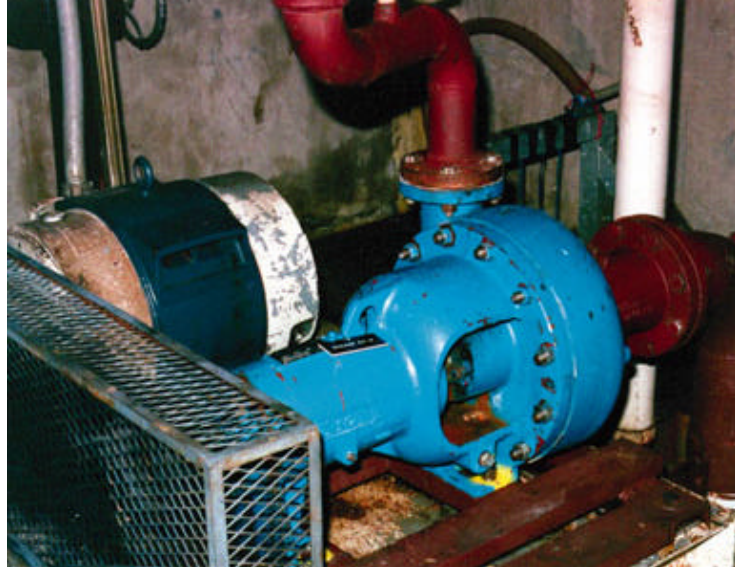
Sand content of sludge at 70%

The Discflo Solution

No pump repairs due to wear and no breakdown for six years

Saving \$10,000s in pump parts

Discflo 'non-contact' design, laminar flow good for 80% solids



Following the success of their initial Discflo pump purchase, Potlatch Corporation of Arkansas has just acquired a second unit to pump its highly viscous and abrasive clarifier sludge.

The first Discflo pump, a 604-2HHD, was started up in November 1995. It is used to pump clarifier sludge with a viscosity of 300cPs and a 70% sand content at the rate of 450 gallons/min. The Discflo pump replaces two self-priming centrifugal pumps. The previous pumps broke down on average once every six weeks and suffered badly from wear due to the highly abrasive nature of the sludge. At a conservative estimate, the plant manager calculated the company was spending around \$21,000 per year per pump on spare parts.

The Discflo pump, on the other hand, has just required its first replacement part due to corrosion ... six years after start-up! Not surprisingly, the company is extremely satisfied with the results. "Since start-up, the Discflo pump has been running with zero downtime," comments the maintenance superintendent at the mill.

Call Discflo now to find out how our pumps can solve your problems.



Discflo Corporation

10850 Hartley Rd
Santee, CA 92071
Phone: (619) 596-3181
Fax: (619) 449-1990
Sales@Discflo.com
www.Discflo.com